

GREAT PRICE! KOKKINO CHORIO



*3 bedrooms, 2 bathrooms,
fantastic views, single level
and large plot and terraces,
all in the popular village of
Kokkino Horio!*

***OFFERED at JUST
€190,000***

This single story 100M2 villa sits on a large slightly sloping plot of 1650M2 and has panoramic views over Souda Bay. Built to a high standard—with full insulation and central heating which means that it can either be used as a bargain permanent home or as a great holiday villa.

The views to the front can never be lost and the mountain views to the side are also magnificent. The plot has potential for further landscaping and development by new owners.



**REF:
KC THEIA**



Miette Lauwers
Tel: (00 30) 6947 374 736
info@yourhomeoncrete.com
www.yourhomeoncrete.com

HOUSE SIZE: 100 m² PLOT SIZE 1650 m²

OVERVIEW:

External steps lead from the gated entrance up to the front door.

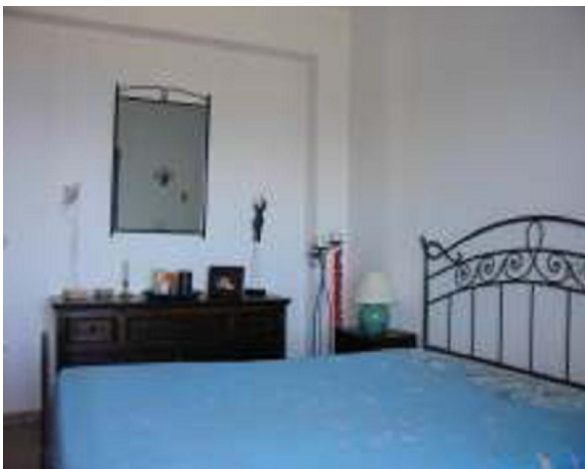
On entering the villa there is a large well lit kitchen and open plan living area of approximately 30M². The well fitted kitchen has stoneworktops. Patio doors lead on to the side veranda.



An arch at the rear of this area leads to a hallway going to the 3 double bedrooms.

There is Also floor to ceiling storage space in the hall.

The first large bedroom leads on to an external patio / terrace. This could easily become a dining room or large office / work space. The master bedroom has large floor to ceiling wardrobes and leads out on to another terrace at the front—with magnificent views.



There is a second double bedroom, a cloakroom WC and also a very large bathroom with vanity unit and walk in shower. Externally there is parking for more than one car and the plot is fenced all around. It is impossible to build 'in front' of this villa and the wonderful view is 'safe' forever