

PLAKA VILLA



**PRICED AT
JUST €115,000**

*This is a lovely villa
Within easy walking
distance of Plaka
Square.*

*With lovely sea views
from its terraces and
balconies this is the
perfect spot for both
relaxing holidays and
for longer visits.*



REF: PLAKA PAN



Miette Lauwers
Tel: (00 30) 6947 374 736
info@yourhomeoncrete.com
www.yourhomeoncrete.com

VILLA SIZE: 60m²

SUMMARY:

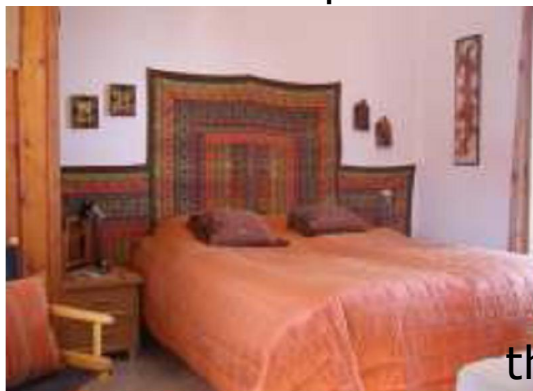
This attractive villa is set in a quiet location just above the popular village of Plaka. With private covered parking area and a host of other extras it really is a Great buy!

Entering from the parking area there is a pretty stone seating area covered under the vine covered pergola.

The wooden arched doorway leads into the dining area and fully fitted kitchen. A further large arch leads to the living area with French doors leading to the front balcony and outdoor seating and BBQ area- the perfect spot for 'al fresco' dining.



Wooden steps lead to the cleverly designed mezzanine sleeping area. This floor also has a good sized shower room which houses the washing machine. Up to the first floor and the large double bedroom with floor to ceiling fitted wardrobes. French doors lead to the upper terrace with its lovely sea views.



WHAT'S INCLUDED

- All fixtures and fittings
- Some furniture items
- Great kitchen with appliances
- Air conditioning (heat / cool) throughout
- Wooden doors and windows throughout
- Water tank and immersion heater
- Satellite TV
- BBQ
- Two balconies
- Covered Car parking
- Built in stone seating area

This really is a great priced property ready to walk into and enjoy!

